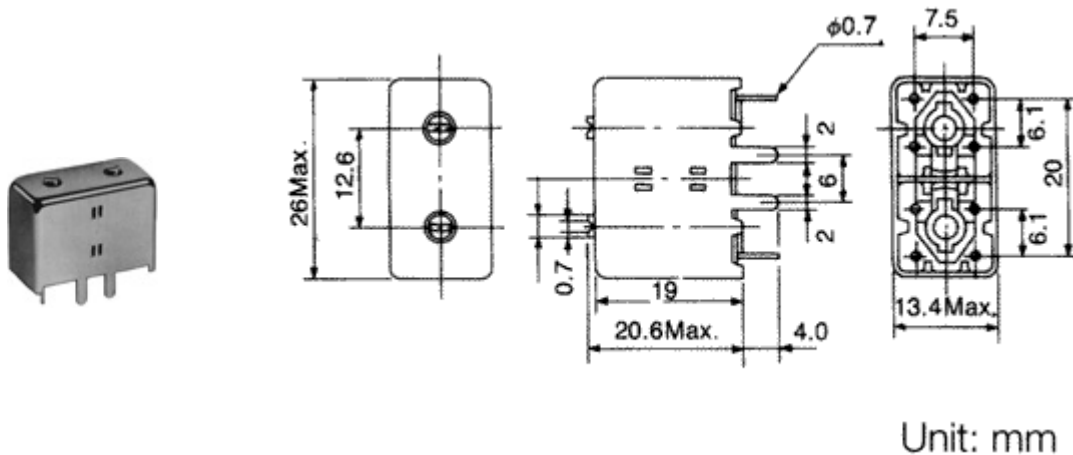


CBW13 Series (DOUBLE TUNED)



Technical Specification

Frequency Range : 96MHz - 220MHz
 Input/Output : 50 ohm

Features

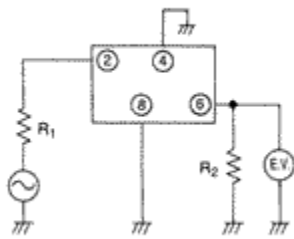
- Superior resistance to shock, vibration, temperature and humidity variation.
- Ideal for the VHF band, such as CATV, where low insertion and high selectivity are important.
- Nickel plated copper shield reduces insertion loss and improves selectivity.
- Brass tuning slug for inductance adjustment is a block form precisely fitted to a threaded adjustment screw for very fine adjustment.
- A spring between the block and the top of the shield provides additional pressure to maintain setting and a constant grounding path.
- Coil form dimensions are precisely controlled through the use of high quality moulds during fabrication to ensure consistent spacing between grooves and a constant winding pitch.
- Superior consistency in the coil winding which in turn results in higher stability electrical characteristics.
- Dividing plate between coil formers is soldered to maintain a consistent reference point (window) between resonators for precise coupling.
- Coil bobbin and base are formed from a specially compounded material with low insertion loss and produces outstanding stability against changes in temperature and humidity.
- Terminals feature rounded ends to facilitate PCB insertion and are presoldered for reliable connections.
- Grounding tabs on cavity simplify grounding and improve stability.

TOKO CBW13 DOUBLE TUNED HELICAL FILTERS

TOKO Ref	Freq (MHz)	BW-1db (MHz)	Selectivity (dB)min		Ripple (dB)max	Ins.Loss (dB)	Imp. (ohm) in/out	BEC Ref
			-15MHz	+15MHz				
271MT-1149A	99	3.0	30	20	1	3	50	086149
271MT-1150A	103	3.0	30	20	1	2.5	50	086150
271MT-1151A	107.5	3.0	30	20	0.5	2.5	50	086151
271MT-1152A	111	3.0	30	20	0.5	2.5	50	086152

271MT-1153A	115	2.0	32	22	0.5	2.5	50	086153
271MT-1154A	119	2.5	30	22	0.5	2	50	086154
271MT-1155A	122	2.0	29	27	0.5	2.5	50	086155
271MT-1156A	126	3.0	25	24	0.5	2.5	50	086156
271MT-1157A	131	3.0	24	23	0.5	2.5	50	086157
271MT-1158A	138	2.0	28	24	0.5	2.5	50	086158
271MT-1006A	145	3.0	25	25	0.5	2.5	50	080190
271MT-1008A	145	2.1	20	20	0.5	2.5	50	080195
271MT-1159A	146	2.5	27	23	0.5	2.5	50	086159
271MT-1160A	154	2.5	25	21	0.5	2.5	50	086160
271MT-1161A	164	2.5	28	25	0.5	3	50	086161
271MT-1162A	171	2.5	20	18	0.5	2.5	50	086162
271MT-1163A	182.5	3.0	23	20	0.5	3	50	086163
271MT-1164A	194.5	2.5	27	24	0.5	3	50	086164
271MT-1165A	207.5	2.5	26	23	0.5	3	50	086165
271MT-1166A	220	2.0	20	18	0.5	3	50	086166

Test Circuits (Bottom View)



Note: Case lugs must be grounded.